



# 2026

***SCHULZ DANCE COMPANY***

***2026 HANDBOOK***

*Where Everyone's a STAR!*

[www.schulzdancecompany.com](http://www.schulzdancecompany.com)

[admin@schulzdancecompany.com](mailto:admin@schulzdancecompany.com)

Unit 4, 5 & 6 / 144 Winton Road Joondalup, Western Australia

# JOIN YOUR DANCE FAMILY

LEARN, GROW, THRIVE AND SHINE



## A MESSAGE FROM YOUR DIRECTOR

Welcome to **Schulz Dance Company**, not just a studio, a family. A home where everyone is a STAR and gets a chance to learn, grow, and thrive.

As we move into **2026**, our studio continues to develop and evolve as a place where stars can train in a professional and loving environment, feel seen, supported and inspired. Schulz Dance Company has always been more than a timetable of classes — it is a community built on warmth, belonging and the belief that every child deserves to shine.

Our programs are intentionally designed to nurture the whole dancer: technically, creatively, emotionally and socially.

We celebrate individuality, encourage curiosity, and guide each student to discover their own artistic voice. With a faculty of passionate educators, a playful curriculum, and a culture grounded in kindness and excellence, we are proud to offer training that is both high-quality and heart-centred.

### ***Dear our NEW families,***

We are so grateful you've chosen to join our community for 2026. Whether your child is taking their very first steps into the world of dance or continuing to grow their skills, we are honoured to be part of their journey. At SDC, we believe dance is more than movement. It is a space where children learn resilience, teamwork, self-expression and joy.

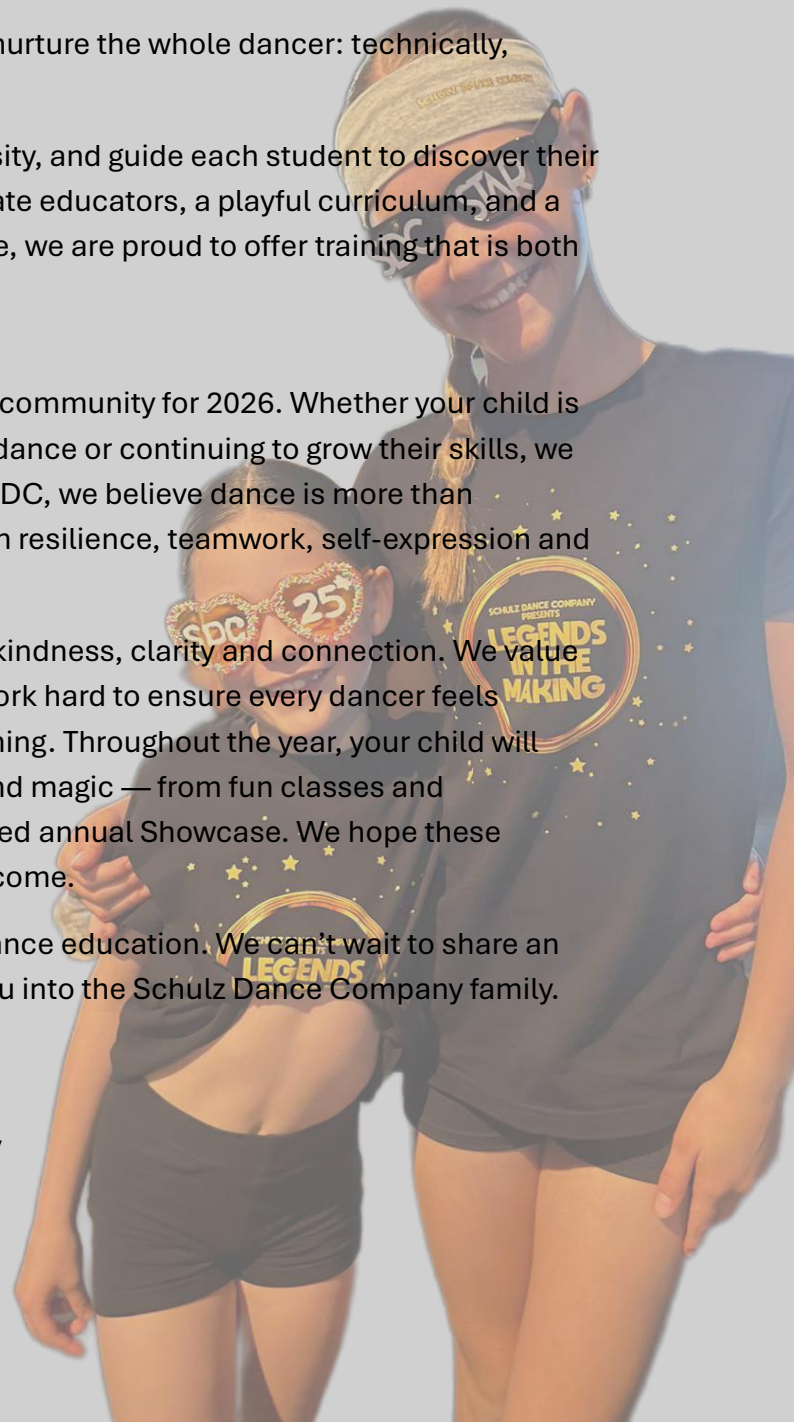
You'll find that our studio culture is built on kindness, clarity and connection. We value open communication, celebrate you, and work hard to ensure every dancer feels supported and proud of who they are becoming. Throughout the year, your child will experience moments of growth, creativity and magic — from fun classes and community events to our beautifully produced annual Showcase. We hope these memories stay with your family for years to come.

Thank you for trusting us with your child's dance education. We can't wait to share an incredible journey together and welcome you into the Schulz Dance Company family.

With gratitude,

**Ashleigh Schulz - Flynn**

Creative Director of Schulz Dance Company



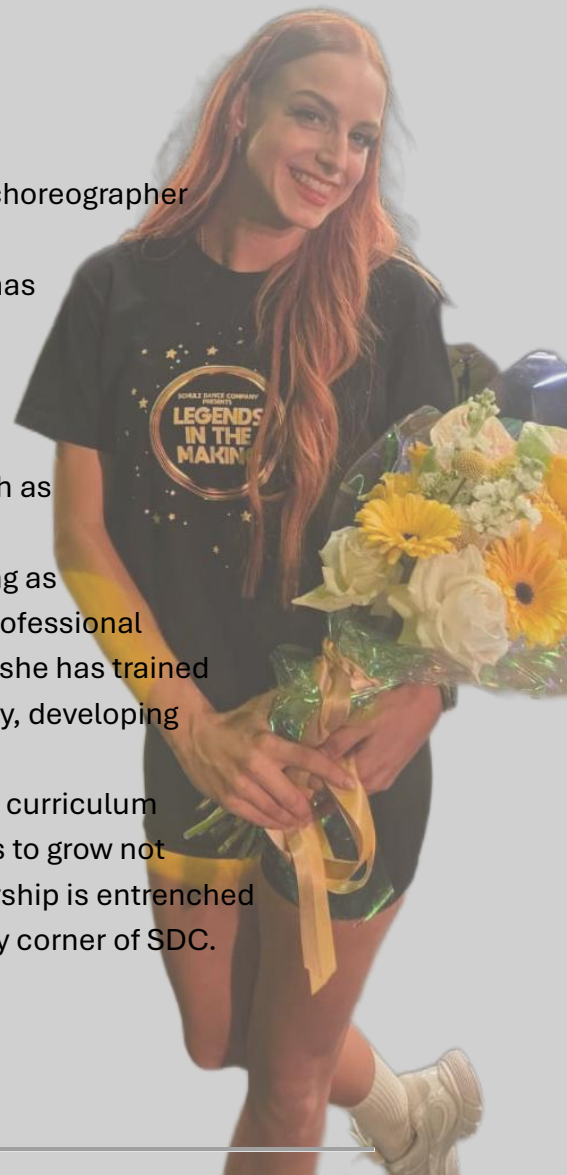
## ABOUT THE CREATIVE DIRECTOR: ASHLEIGH SCHULZ

Ashleigh Schulz is a visionary creative leader, educator and choreographer whose work blends imagination, structure and heart.

As the founder and director of Schulz Dance Company, she has built a studio culture celebrated for its warmth, inclusivity and artistic excellence.

With a background in adjudicating, professional performing, training, and choreographing in all areas of performance such as musical theatre, chorus & cabaret work, and corporate entertainment throughout Perth and Australia, as well working as a performer in Disneyland Paris, Ash has enjoyed a vibrant professional career across Australia, and Europe. Throughout her journey she has trained and taught at numerous studios nationally and internationally, developing a deep passion for nurturing performers.

With almost a decade of experience in creative direction and curriculum design, Miss Ashleigh crafts programs that empower dancers to grow not only in skill, but as confident, expressive humans. Her leadership is entrenched in empathy, clarity and celebration — values that shape every corner of SDC.



---

## OUR MISSION

Our mission at Schulz Dance Company - **To create a dance home where everyone feels valued, inspired and capable of extraordinary things.**

We believe in:

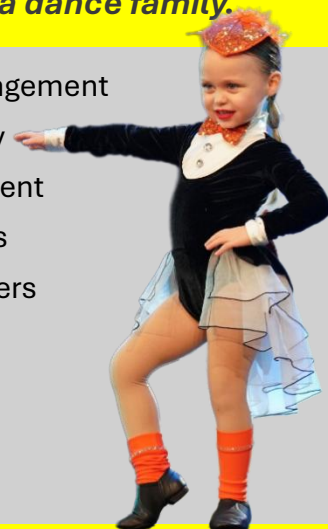
- Nurturing individuality
- Celebrating creativity
- Building confidence
- Developing strong technical foundations
- Fostering teamwork and kindness
- Creating magical experiences that last a lifetime



# WHY CHOOSE SCHULZ DANCE COMPANY?

*At Schulz Dance Company, we are more than just a dance studio — we are a dance family.*

- ✦ Kindness – Every star & family is treated with care, respect, and encouragement
  - 🎨 Creativity – We inspire imagination, expression, and individuality
  - 🌱 Growth – Supporting personal, technical, and emotional development
  - 🤝 Community – A welcoming, inclusive environment for all families
  - 🏆 Excellence – High-quality training with passionate, qualified teachers
  - 😊 Joy – Dance should be fun, uplifting, and confidence-building
  - 👨👩👧👦 Family – A supportive dance home where everyone belongs
  - 👊 Great Training – Strong foundations across all styles
  - ☀️ Support – Every star is encouraged to shine at their own pace



*Schulz Dance Company is a dance home where every star & SDC family feels valued, supported, and inspired.*

*Schulz Dance Company – Where Everyone's a STAR!*

## PERFORMANCE OPPORTUNITIES

- ✦ ANNUAL SHOWCASE
- ✦ IN-STUDIO WATCHING EXPERIENCES
- ✦ SOLO COMPETITIONS THROUGHOUT THE YEAR
- ✦ TROUPE COMPETITIONS THROUGHOUT THE YEAR
- ✦ COMMUNITY EVENTS



## UNIFORM GUIDE

At Schulz Dance Company, we encourage our stars to wear dance attire they feel comfortable in and can move freely in, allowing them to express themselves while training. At Schulz Dance Company, correct uniform and presentation are essential for safety, technique, and professionalism in every class.

Denim and inappropriate outfits are not permitted for safety and movement purposes.

Our SDC uniform and dancewear are available for purchase at our SDC shop front desk at any time. Studio colours: Yellow, Grey & White.

Uniform & Class Expectations:

- Hair must be up, secure, and neat for all classes.
- Correct footwear must be worn for each class once enrolled.
- No jewellery is to be worn during classes.

Trial Classes:

For trial classes, stars are welcome to wear any comfortable exercise or dance clothing they already own. Bare feet or sneakers are acceptable for trial classes, depending on the style.

Once classes are confirmed, appropriate shoes must be worn.

*This policy ensures a safe, comfortable, and positive training environment for all stars.*



## **UNIFORM GUIDE CONTINUED...**

### **BALLET**

All students must wear the **SDC leotard**, ballet skirt, and tights in the **correct style and colour for their age group**

Hair must be in a **neat bun** for all ballet classes

### **FOOTWEAR REQUIREMENTS**

Correct footwear **MUST** be worn to every class.

**No socks alone are ever permitted** on SDC premises

- Jazz, Ballet, Acro & Lyrical shoes must be purchased through the SDC Shop (approved footwear line) and worn in the correct classes
- Hip Hop: Sneakers must be worn
- Tap: Tap shoes required (no specific brand/colour unless advised for performances)

### **Bare Feet Classes**

Allowed for:

- Lyrical (6&U – 8&U)
- All Cirque classes
- Acro Beginner I & II, and Intermediate I
- Wiggle & Groove & Baby Sensory Classes

### **Contemporary**

12&U and above: SDC Contemporary kneepads (available in our shop) are required

### **Modelling**

Specific footwear may be required and will be advised by the teacher

### **Wiggles World of Dance**

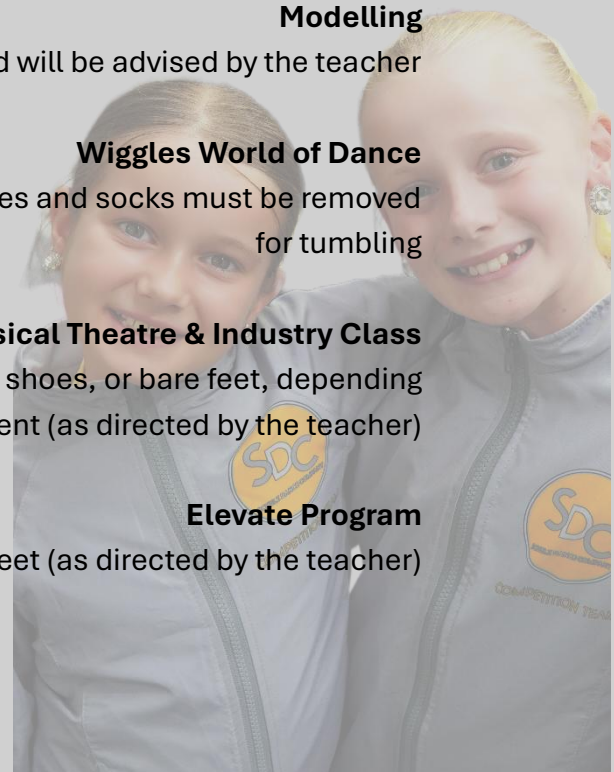
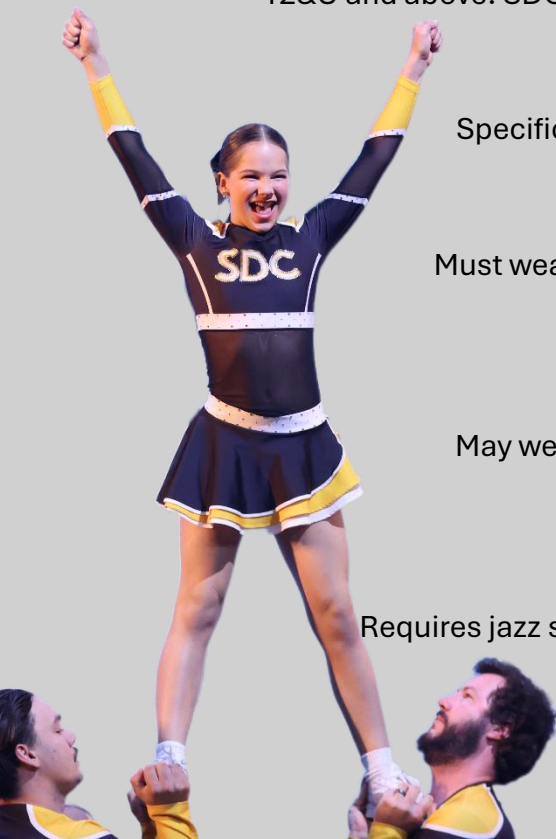
Must wear ballet or jazz shoes then shoes and socks must be removed for tumbling

### **Musical Theatre & Industry Class**

May wear jazz shoes, sneakers, lyrical shoes, or bare feet, depending on the class content (as directed by the teacher)

### **Elevate Program**

Requires jazz shoes, lyrical shoes, and bare feet (as directed by the teacher)



## ***OUR CULTURE***

Schulz Dance Company is built on community.

We embrace diversity, celebrate inclusion, and create a safe, uplifting environment where all stars, faculty, families, and friends can explore and rejoice who they are.

Once you join SDC, you become part of a warm, connected, artistic family where everyone is supported, encouraged and celebrated.

---

## ***OUR HOME IN JOONDALUP***

Our studio is designed to feel like a second home:

- Bright, welcoming studios
- Warm waiting areas
- A friendly, community-centred atmosphere

Our Schulz Dance Company Home is has LEVELLED UP for 2026!

Our NEW entrance is now located Unit 4/144 Winton Road Joondalup.

Our new entrance includes a welcoming new waiting room, our front desk upon entrance, and our in-house shop for all your Schulz Dance Company merch and dancing needs for your stars to shine.

Our studio extends into unit 5 and 6 of the building behind unit 4. Entrance to Schulz Dance Company is ONLY available through the front entrance. Our stars are only to be picked up and dropped off in our entrance area.

Schulz Dance Company is under 5 minutes away from the Shenton Avenue exit of the Mitchell freeway. Our SDC home is easily seen as you enter Winton Road from Pontiac Way. Public transport is accessible to reach us with busses and trains nearby. We recommend driving and using our ample parking at the front and back of our premises.

---



## **OUR STUDIOS**

Our studios are beautifully designed to provide a safe and loving environment for your star, and help them to grow, thrive and shine at Schulz Dance Company.

### **STUDIO WINNIE**

Our studio is thoughtfully designed for our youngest stars, offering dedicated spaces for our Little Stars Program, Wiggles World of Dance, Petite, and Junior groups. The studio is equipped with engaging props and specialised learning tools that help your star have fun, learn, thrive, and grow. Our beautiful NEW studio supports every star's development, building confidence, strengthening ability, and nurturing the love of dance.

### **STUDIO REMY**

Our smaller studio is purpose-designed for conditioning, strength training, and private technique and skill lessons. Equipped with specialised training tools, this NEW space allows dancers to safely build strength, refine technique, and level up their skills with focused, personalised attention.

### **STUDIO OSWALD**

Studio Oswald is our beautiful, spacious flagship studio, the original home of SDC and a space we continue to cherish. Designed for all dancers to learn, grow and thrive, this studio provides an inspiring environment for classes across the studio. This studio is the dedicated home of our Cirque program, featuring aerial silks and lyra supported by a professionally equipped and safely installed pulley-system rigging. This studio embodies the heart of SDC: a place where stars feel supported, challenged and celebrated.

### **STUDIO MARIE**

Our singing and music room is purpose-designed for our star vocalists and musicians to receive elite training in a calm, distraction-free environment. This comfortable and beautifully appointed space allows your star to focus deeply with their teacher, develop strong technique, and work hard in a safe, fun, supported and nurturing setting.

### **STUDIO MICKEY & PLUTO**

Studio Mickey and Studio Pluto share two names because this stunning extra-large space can be seamlessly divided into two spacious studios when needed, ensuring classes run without distraction. When opened as one combined studio, the space offers exceptional room for our stars to flourish, train and learn with confidence. Purpose-designed for acrobatics, this studio allows dancers to utilise the full floor, mats and equipment for extended skills, tumbling progressions and safe, supported training.

# CLASS BREAKDOWN

## CLASSICAL BALLET

Classical Ballet is the foundation of all dance styles, focusing on technique, posture, musicality and artistry. In our ballet classes, our stars develop strength, flexibility, coordination and discipline through structured exercises. We believe that ballet is an integral part of learning how to dance as it supports every dance style, helping students grow as well-rounded, capable and resilient performers.

### POINTE & PRE PAINTE

Pre-pointe and pointe training are included as part of our Ballet classes. Pre-pointe begins in our Pre-Elite 12 & Under Ballet classes, where dancers focus on strengthening, alignment and safe technique to prepare their bodies for the demands of pointe work. We believe in building strong foundations early to ensure every dancer progresses safely and confidently. Once dancers are assessed and fitted for pointe shoes *by a qualified dance physiotherapist*, they continue to develop both their pointe and pre-pointe skills. This ongoing combination of training helps maintain strength, refine technique and support long-term, safe progression En Pointe.

## CONTEMPORARY

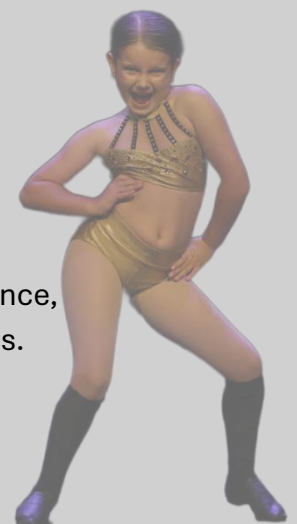
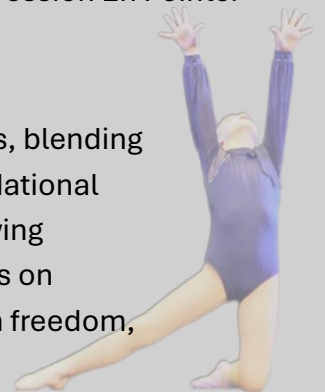
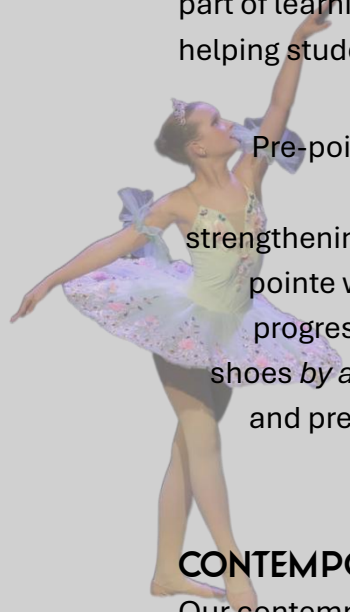
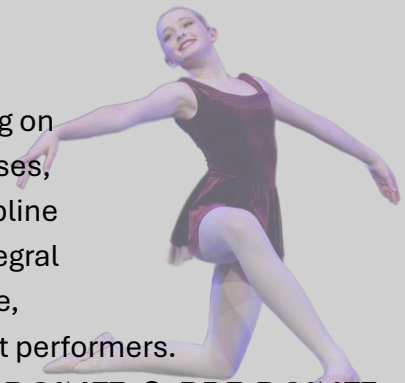
Our contemporary classes explore a wide range of contemporary styles, blending technique, creativity and expressive movement. SDC trains good foundational contemporary technique and creates choreography like no other, allowing our stars to develop versatility and a strong artistic voice. Classes focus on strength, control, fluidity, floorwork, encouraging dancers to move with freedom, intention and emotional connection.

### HIP HOP

Hip Hop is a high-energy, expressive and dynamic dance style that celebrates rhythm, individuality and musicality. SDC stars learn coordination, timing, confidence, breaking skills, and performance quality while developing their own unique style, all in a fun, empowering and supportive environment.

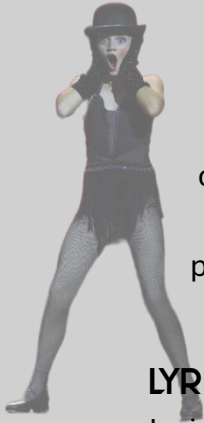
## INDUSTRY CLASS

Industry Class is designed to give dancers a true taste of the professional dance world. Each week, stars learn a brand-new routine in a different style of dance. This fast-paced format helps dancers develop versatility, adaptability and strong pick-up skills, mirroring the expectations of real industry auditions and rehearsals. Stars are challenged to think quickly, retain choreography, and perform with confidence, preparing them for advanced training and future performance opportunities.



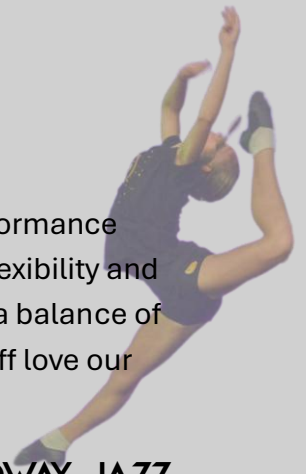
## **JAZZ**

Jazz is a dynamic and expressive style with high-energy movement and performance quality. At SDC, our jazz classes focus on developing technique, strength, flexibility and clean lines, while also exploring musicality, style and stage presence. With a balance of disciplined technique and fun, upbeat choreography, our SDC stars and staff love our jazz classes.



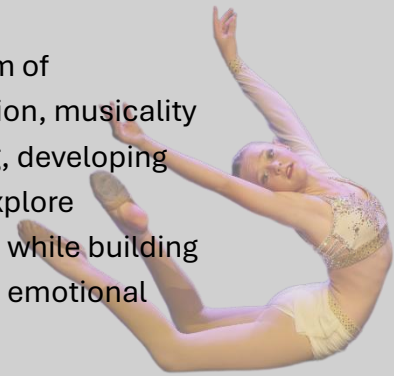
## **BROADWAY JAZZ**

Broadway Jazz celebrates an iconic style of musical theatre, blending character, storytelling and classic jazz technique. While Broadway Jazz is explored in our Jazz classes, Solos/Duos and other genres SDC offer, our Senior Company and Elite stars also enjoy a dedicated Broadway Jazz class. Here, stars work on showgirl lines, precision, stage presence and traditional Broadway techniques inspired by legendary choreographers and musical theatre productions.



## **LYRICAL**

Lyrical Dance blends the technique of ballet with the expressive freedom of contemporary movement, allowing dancers to tell stories through emotion, musicality and flow. In this class, our stars learn to connect movement with feeling, developing control, extension, fluidity and strong performance quality. SDC stars explore expressive choreography, dynamic contrasts and musical interpretation while building solid technical foundations. Lyrical encourages confidence, artistry and emotional connection, helping each SDC star grow.



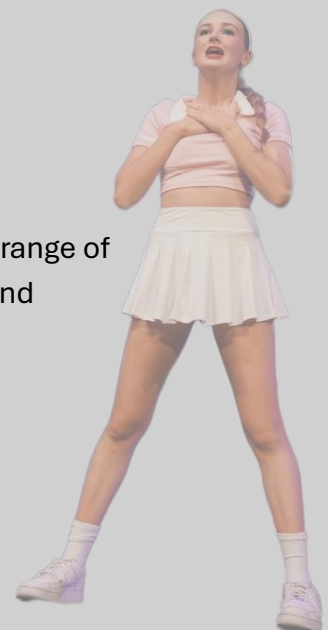
## **MODELLING & SPEAKING**

This class helps stars develop confidence through walking, standing, and speaking skills. Stars learn proper posture, confident walking techniques, and how to speak clearly with strong body language. The class builds self-confidence, stage presence, and effective communication skills in a supportive environment.



## **MUSICAL THEATRE, DRAMA & SINGING**

This combined class helps students build confidence and strong stage presence through acting, singing, and musical theatre. Stars learn choreography to build productions, perform with expression, and use their voices correctly and expressively. They explore and learn music from a wide range of musicals, developing creativity, teamwork, and performance skills in a fun and supportive environment.



## TAP

Our Tap classes teach a range of tap styles while focusing on strong tap technique, timing, and rhythm. Stars learn how to create clear sounds with their feet and develop musical awareness and coordination. Tap is a fun, energetic style that builds confidence and encourages stars to enjoy rhythm and movement.

## CHEER & PARTNERING

This class focuses on cheer skills and partnering drills that build strength, trust, and friendship. Stars and their teachers work together to safely create exciting lifts, stunts, towers, and throws, developing teamwork, confidence, and strong performance skills while reaching amazing new levels together.

## CIRQUE (AERIAL SILKS & LYRA)

Our Cirque classes explore a unique and exciting art form through aerial arts, including Lyra (aerial hoop) and aerial silks, as well as circus foundations. Stars build strength, flexibility, trust, and confidence while learning safe techniques and developing creativity and body awareness in a supportive & fun environment.

## ADULT JAZZ/BALLET/FITNESS & TAP CLASSES

Our Adult and Parent classes are fun, welcoming dance classes for parents and adults of all levels, from beginners to those with experience. You'll learn new skills, enjoy some fitness, have a laugh, and make new friends in a relaxed and supportive environment.

## DADS DANCE CLASS

The Dads Dance Class is a fun and energetic way to stay fit while learning new dance skills each week. Dads are taught with new moves to Challenge their own dancers, enjoy a great workout, and have plenty of laughs. Our dance dads are social bunch, so you can stay for a drink, make new friends and enjoy time together.

## EXTENSION BALLET

The Extension Ballet Class is a combined-age class designed to give students an extra ballet lesson. This class focuses on improving technique, strength, flexibility, and performance quality, helping students extend their ballet training.

## EXTENSION ACROBATICS

The Extension Acro Class is an open gym-style, combined-age class with teachers on hand to help. It's designed for students to work on acro skills at their own level, get extra guidance and tips from their teachers, and practice safely while improving in their acrobatic skills.

## ACROBATICS

Our Acro class combines dance and gymnastics to develop strength, flexibility, balance, and control. Stars are taught skills progressively with a strong focus on proper technique and safety. At SDC, our Acrobatic classes use a wide range of equipment to support safe learning and skill development, with teachers guiding and spotting stars throughout. All teachers and student teachers are trained under Acrobatic Arts program, ensuring a safe, supportive, structured, and high-quality acro training environment.



*Our Acro classes are skill-based rather than age-based (except for our Tiny Tumblers, ages 6 & under), allowing students to train at the level that best suits their ability. Our Highly trained staff will assign the class best suited for your star to receive the best and safest training.*

*The Director of Schulz Dance Company will have the final decision on class placement for each star.*

**ACRO LEVELS and skills required are LISTED BELOW**

### BEGINNER I: ACRO SLATE

- Perfect for Beginners!
- Learn New Skills!
- Obtain tricks safely!
- Learn Acro skills, Tumbling, & Gym skills + strength, flexibility & Balance

### BEGINNER II: ACRO STONE (MUST HAVE ACHIEVED)

- Forwards & Backwards Rolls
- Cartwheel Both Sides
- One Handed Cartwheel
- Bridge From Standing
- Front Limber Beginning

### INTERMEDIATE I: ACRO STEEL (MUST HAVE ACHIEVED)

- Cartwheel One Handed Both Sides
- Standing Bridge & Recover
- Front Limber
- Back Kickover
- Round Off

*The classes below are part of our Advanced Acro Program. We highly encourage all stars to participate in the full Acro Program, as it provides complete acro training and helps students build strong technique, progress safely, and reach their full potential.*

### INTERMEDIATE II: ACRO STERLING (MUST HAVE ACHIEVED)

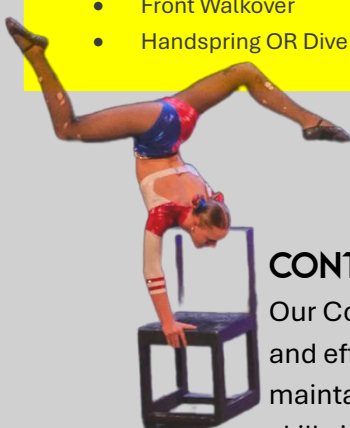
- Flying Cartwheels
- Arabian Front Limbers (One)
- Back Walkover
- Front Walkover
- Handspring OR Dive Tinski

### ADVANCED I: ACRO PLATINUM (MUST HAVE ACHIEVED)

- Fast Cartwheels
- Arabian Front Limbers
- Arabian Back Limber
- Moon back walkover & En Lair Back walkover
- One handed Front Walkover
- Round off One Handed
- Front Handspring One Handed
- Flying Front Walkover
- Nip up & Handspring
- Back handspring & Side Aerial

### ADVANCED II: ACRO TITANIUM (MUST HAVE ACHIEVED)

- Slow Cartwheels
- Handstand walks
- Arabian Front Pike Limber
- One Handed Back Walkover
- One Handed Dive Tinski
- Valdez OR Tinsica
- Snap Down OR Front Aerial
- Back Handspring & Back Step out
- Round off Back Handspring Multiple & Cartwheel Backstep out Multiple
- Standing Tuck OR Layout/Tuck from entry



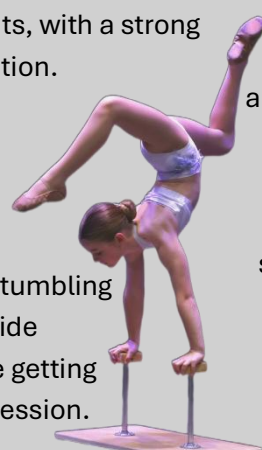
## CONTORTION

Our Contortion classes are split into two levels to ensure safe and effective training. Level One focuses on building and maintaining back flexibility, strength, and basic contortion skills in a safe and controlled way. The advanced level is designed for experienced contortionists to safely practise more advanced contortion skills and movements, with a strong emphasis on technique and injury prevention.



## TUMBLING

Our Tumbling class is a fun and energetic class focused on tumbling and advanced skills. With trained staff ready to spot and guide students safely, stars gain confidence in their abilities while getting extra practice to improve technique, control, and skill progression.



## BALANCING & APPARATIS

This class focuses on developing all types of balances, apparatus balances, and smooth transitions between different balancing positions. Students build strength, control, and stability while learning how to move confidently and safely through a variety of balance skills.



CREATING THE WORLD'S MOST TRUSTED ACRO PROGRAMS

ACROBATIC ARTS

# SCHULZ DANCE COMPANY

## LITTLE STARS LOADING



AGES 3 MONTHS - 5 YEARS

At Schulz Dance Company, our Wiggles World of Dance program combines music, movement, and fun to help your little stars grow, learn, and shine!

At Schulz Dance Company, our Little Star Loading program has multiple classes throughout the week with multiple different levels and styles to meet yours and your little star's needs.

Our Wiggles World of Dance Classes supports physical, social, emotional, and cognitive development, while giving children a love for dance and language.

### WHY PARENTS & LITTLE STARS LOVE IT:

- Move & Groove:** Builds coordination, balance, strength, and body awareness.
- Brain Boost:** Singing and rhythm develop memory, listening skills, and language.
- Vocabulary & Pronunciation:** Songs help children learn new words and say them clearly.
- Confidence & Expression:** Singing, dancing, movement, and acting let kids express feelings and build self-confidence.
- Social Fun:** Children work together, learn teamwork, and make friends.
- Lifelong Love of Language & Music:** Repetition, rhythm, and creative play make learning words and sentences natural and fun.

### WIGGLES WORLD OF DANCE CLASSES (2-4.5YRS)

Our Wiggles World of Dance classes are perfect for little stars to explore dance, build confidence, and have fun! Using music, props, and soft play equipment, these classes are a social, beginner-friendly environment where children can learn new skills at their own pace. Performance opportunities are available but not required. These classes give your little star a joyful introduction to dance, music, and movement, helping them grow, explore, and shine!

#### CLASSES INCLUDE:

##### LITTLE TAPPERS

Learn tap dance & rhythm 🎵

##### WIGGLES DANCE & LITTLE TUMBLERS

Explore dance, performing, dance skills, plus beginner acro, climbing, balancing, and movement skills 🎪

##### MUSICAL THEATRE

Explore music, singing, and acting while learning musicality and having fun 🎭

### WIGGLE & GROOVE CLASSES

#### TODDLER & PARENT CLASSES AGE 1 - 3 YEARS

Toddler & Parent Class is a fun, interactive session where parents and toddlers explore movement, music, and early dance and gymnastics together.

Through playful activities and props, little stars build coordination, balance, confidence, and social skills while you make new friends.

Perfect for little ones who aren't quite ready to attend class without Mum just yet 🌟

### PLAYGROUP (3 MONTHS - 5 YEARS)

Our Playgroup Class is a fun, pay-as-you-go session for parents and little stars to enjoy together! Using nursery rhymes, games, props, soft play, and play equipment, stars explore, learn, and have fun while making new friends. Parents can stay after class for tea or coffee, let their stars keep playing, and connect with other families in a relaxed, social environment. 🌟

### BABY SENSORY CLASS (3 - 15 MONTHS)

Our Baby Sensory Class is a fun, interactive session for parents and little stars to explore movement, music, and play together. Using nursery rhymes, and fun music throughout the class, as well as the use of props, and soft play equipment, your little star will develop motor skills, coordination, cognitive abilities, and social interaction while having a joyful and enriching experience of movement and exploration. 🌟



## PRIVATE SINGING TUITION

Our Private Singing Tuition offers personalised, one-on-one coaching to help stars develop their voice with confidence. Lessons focus on vocal technique, breath control, pitch, tone, and performance skills, tailored to each star's age, level, and goals. Private singing tuition supports musical theatre, performance confidence, and vocal health in a positive and encouraging environment. Contact Schulz Dance Company to book your lessons.



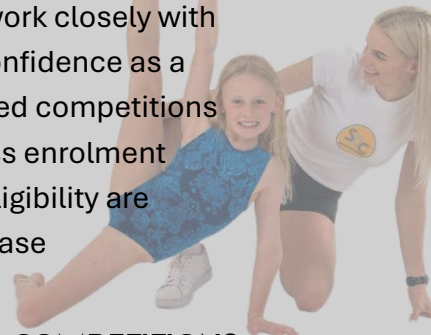
## PRIVATE GUITAR TUITION

Our Private Guitar Tuition provides one-on-one lessons tailored to each star's age, ability, and musical goals. Stars learn proper technique, chords, rhythm, and musicality while building confidence and enjoyment in playing. Lessons are suitable for beginners through to more experienced players, delivered in a supportive and encouraging environment. Contact SDC to book your lessons.



## PRIVATE LESSONS

Private one-on-one tuition at Schulz Dance Company is available for stars who are ready to take their training to a more focused and advanced level. These sessions support strong choreography retention, personal accountability, performance quality, and commitment to individual growth. Private training allows stars to work closely with a teacher to refine technique, develop performance skills, and build confidence as a solo performer. Soloists may have the opportunity to perform at selected competitions and events throughout the year. Private lessons are not a standard class enrolment option and are offered at the discretion of the studio. Availability and eligibility are assessed individually. For enquiries regarding Private Solo Training, please contact [admin@schulzdancecompany.com](mailto:admin@schulzdancecompany.com)



## TROUPE CLASSES & COMPETITIONS

Our Troupe Classes offer a fun, supportive, and encouraging environment where every star is given the opportunity to shine. These classes focus on teamwork, confidence, performance skills, and enjoying the experience of dancing together, while being supported and encouraged every step of the way. Troupe classes and competitions are a separate enrolment from our recreational dance program. For more information about Schulz Dance Company's troupe classes, competitions, and how your star can join the SDC Competition Team for 2026 or in the future, please email [admin@schulzdancecompany.com](mailto:admin@schulzdancecompany.com).



***We are proud to create opportunities that inspire growth, confidence, and a love of performance for every star.***

## STUDIO HIRE

Studio hire is available for Schulz Dance Company stars who wish to practise competition dances, solos, duos, or troupes. Our studios are also available for external dancers and groups, providing a safe, professional space for rehearsals and training.

Studio hire is subject to availability and studio guidelines. For bookings and enquiries, please see our SDC front desk or contact Schulz Dance Company.





# ELEVATE PROGRAM



The Elevate Program is designed to provide extra training and extension classes for stars who want to push their training further and reach their highest potential! This program supports skill development, confidence, flexibility, and strong technique across all styles.

The Elevate Program is free with our Unlimited Pass for each age group and is the perfect way to help your star grow, improve, and take their training to the next level.



## AGE GROUPS:

- 6 & Under
- 10 & Under / 8 & Under
- 12 & Under
- 14 & Under / 19 & Under



## WHAT'S INCLUDED:

- Stretch & Strength Training
- Conditioning
- Turns & Leaps
- Control & Technique



# SCHULZ DANCE COLLECTIVE PART TIME PROGRAM

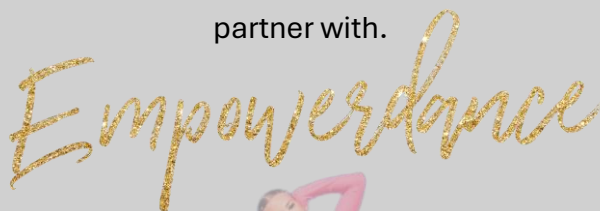
The SDC Part-Time Program is designed for passionate young dancers who want to further their dance education while continuing their school studies.

### Ages 12+

This program is ideal for high school stars who are eager to develop their technique, artistry, and confidence. Stars have the opportunity to spend one or more days training at SDC, immersing themselves in a professional dance environment and working toward becoming the dancers they aspire to be.

### Ages 14+ – Certificate Pathway

Stars can enrol in our extended part-time pathway, training up to two days per week while completing their dance certificates. This includes, dance, acrobatics, musical theatre and teaching pathways. These nationally recognised certifications are delivered through Empower Dance, an organisation we proudly partner with.



Empowerdance

Through expert instruction, structured training, and a supportive community, the SDC Part-Time Program provides dancers with the skills, discipline, and inspiration needed to take their training to the next level.

This program is perfect for Star wanting to achieve becoming a Professional Dancer/Performer and working in the industry, a Choreographer or a Certified and well-trained dance Instructor.



## **TERM DATES 2026**



<b>Term One:</b>	MONDAY FEB 2 <sup>ND</sup> – THURSDAY APRIL 2 <sup>ND</sup>
<b>Term One Studio Closures:</b>	MONDAY MARCH 2 <sup>ND</sup>
<b>Term Two:</b>	MONDAY APRIL 20 <sup>TH</sup> – SATURDAY 27 <sup>TH</sup> JUNE
<b>Term Two Studio Closures:</b>	SATURDAY APRIL 25 <sup>TH</sup> & MONDAY JUNE 1 <sup>ST</sup>
<b>Term Three:</b>	MONDAY JULY 13 <sup>TH</sup> - SATURDAY SEPTEMBER 19 <sup>TH</sup>
<b>Term Three IMPORTANT dates:</b>	Musical Theatre Concert September 25 <sup>th</sup>
<b>Term Four:</b>	MONDAY OCTOBER 5 <sup>TH</sup> – SATURDAY DECEMBER 6 <sup>TH</sup>
<b>Term Four Studio Closures:</b>	MONDAY NOVEMBER 9 <sup>TH</sup> – FRIDAY NOVEMBER 13 <sup>TH</sup>
<b>Term Three IMPORTANT dates:</b>	SDC end of year concert weekend November 6 <sup>th</sup> -8 <sup>th</sup> End of year Celebration December 6 <sup>th</sup>

---

## **AGE GROUPS 2026:** AGE GROUPS IS DETERMINED BY AGE AS OF 31<sup>ST</sup> DECEMBER 2026.



<b>3-15 months:</b>	BABY STARS
<b>1-3 years:</b>	WIGGLE & GROOVE STARS
<b>2 years – 4.5 years:</b>	LITTLE STARS
<b>3 – 6 years:</b>	6&U PETITE STARS
<b>7-8 years:</b>	8&U JUNIOR STARS
<b>9-10 years:</b>	10&U INTERMEDIATE STARS
<b>11-12 years:</b>	12&U PRE-ELITE STARS
<b>13-14 years:</b>	14&U ELITE STARS
<b>15-19 years:</b>	19&U SENIOR COMPANY STARS

*Schulz Dance Company carefully places stars into classes based on age, skill level, and overall readiness. From time to time, adjustments to class levels or age groups may be made to best support each star's growth. For consistency and fairness, class placements are determined by SDC staff, and we are unable to accommodate parent-requested moves or changes. We appreciate your understanding and support in helping us create the best learning environment for all dancers.*

# **FREQUENTLY ASKED QUESTIONS**

## **HOW DO I COMMUNICATE WITH SDC?**

Email: [admin@schulzdancecompany.com](mailto:admin@schulzdancecompany.com)

Miss Ashleigh or our friendly admin team will get back to you as soon as possible.

We also use a private Facebook group for enrolled families for parents to communicate and ask questions. Our admin team are on this page as well.

Page name: **SDC Parents Page**

Please do not message staff directly through phone, email, or social media. We ask that all communication with Schulz Dance Company, to be done through email. You can always speak to Miss Ashleigh (The director) when available. Our friendly admin staff at the front desk are always ready to assist.

## **WHAT IF I OR MY CHILD IS ABSENT?**

At SDC, we do require full attendance, however we understand that stars may occasionally need to be absent from time to time. Please email [admin@schulzdancecompany.com](mailto:admin@schulzdancecompany.com) to notify us of any absences. Absences cannot be taken out of fees, and makeup lessons are not permitted, unless it is the Wiggles World of Dance classes.

Regular attendance is important, as it ensures each star is making the most of their training and time at Schulz Dance Co.

## **CAN PARENTS WATCH CLASSES?**

At Schulz Dance Company, classes are run as closed sessions, meaning parents and family members do not observe classes (except for our parent-involvement classes). This approach supports focus, confidence, and independence, allowing stars to engage fully with their teachers and training.

Families are warmly invited to watch and celebrate their star's progress during our Watching Experience Weeks held in Term One, Term Two, and Term Four.

## **WHAT DOES SDC EXPECT OF FAMILIES?**

At SDC, we value kindness, respect, punctuality, and a positive attitude. We ask families to support these values by fostering clear communication, encouraging commitment, and helping create a welcoming and supportive community for all stars and families.

## **CAN MY CHILD DANCE IN TWO AGE GROUPS**

Dancers are placed in their correct age group to ensure appropriate training and development. Dancing in two age groups is only permitted with prior approval from SDC.

## **CAN I / MY CHILD DANCE AT TWO STUDIOS?**

We encourage stars to immerse themselves fully in their training at SDC to get the most out of the program.

Training at another studio is generally discouraged and may require approval.

## **WHAT SHOULD I / MY CHILD WEAR FOR A TRIAL?**

For a trial class, stars may wear their own exercise or dance clothing. Bare feet or sneakers are suitable for the trial, depending on the style of class.

Once enrolled and classes are selected, stars are required to wear the correct dance shoes and dance cloths or SDC uniform. Make sure to check out our SDC Shop for our amazing dancewear, accessories and shoes. If we don't have what you need, our amazing staff will happily guide you.

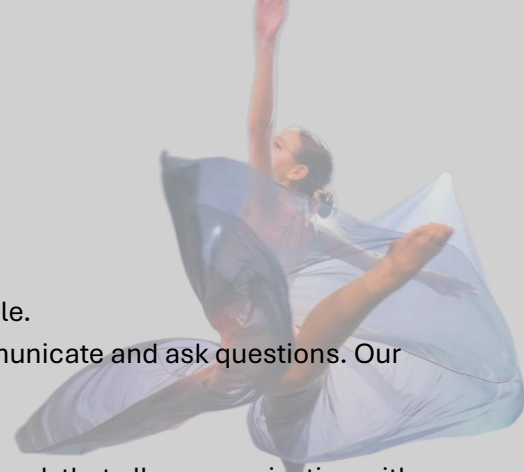
## **HOW DO I PAY OUR FESS?**

Payments can be made in full at the start of every term by the due date listed on the invoice. Full payments may be made via Stripe Pay, or at the front desk of Schulz Dance Company using cash or card. Please note that card payments incur a 2% surcharge due to Square Pay fees.

These payment options are available for FULL payments only.

For part payments, a fortnightly direct debit arrangement is required.

Schulz Dance Company will provide instructions on how to set up direct debits upon enrolment.



## **IS THERE AN END-OF-YEAR SHOW?**

Yes — SDC proudly presents an annual end-of-year spectacular held at the Allan Shaw Centre. This incredible production is more than just a concert — it's a full experience.

We place equal importance on high-quality dance and ensuring our stars are having fun on stage. The show is designed to be enjoyable and engaging for families and audiences of all ages. All our stars and genres are included, creating a diverse and exciting performance.

Every element is carefully considered — from the music selection and costumes to staging, lighting, viewing experience, video & photos, and lasting memories. We pour our heart, love, and soul into every detail to ensure the show is truly special and unforgettable for everyone involved.

## **DO YOU OFFER EXAMS?**

No — we prioritise creative, versatile training. We believe exams can add unnecessary pressure and can limit our stars technique, skills and artistic growth. Our focus is on developing confident, well-rounded stars through high-quality training that supports creativity, individuality, and long-term development.

## **DO YOU ATTEND COMPETITIONS?**

Yes — we attend select competitions that align with our values. At SDC, we love comps, and we create an environment where all stars to have the opportunity to participate in competitions in a way that is fun, supportive, and not stressful.

We participate in 2–3 troupe competitions each year and offer solo, duo, and trio opportunities through competition team. These compete at several events throughout the year. Our focus is on building confident, professional performers while maintaining a positive, encouraging, and enjoyable competition experience.

## **HOW CAN WE BE PART OF THE COMP TEAM?**

To express interest in joining the SDC Competition Team, please talk to Miss Ashleigh and contact us at [admin@schulzdancecompany.com](mailto:admin@schulzdancecompany.com). Our team will provide you with further information and next steps.

## **AM I OR MY CHILD ELIGIBLE FOR SOLO WORK?**

Solo opportunities are based on a dancer's readiness and director approval. At SDC, we aim to give every dancer the opportunity to grow and be challenged at the right time, ensuring solos are a positive and supportive experience.

## **DO STARS PRACTISE THEIR TROUPE DANCES IN CLASS?**

No. Troupe dances are rehearsed in separate troupe rehearsals held on Wednesday afternoons (and Fridays for Acro). This allows troupe rehearsals to stay fun and focused, while stars can continue to work on technique, skills, and training in their regular classes with all their friends—whether or not they participate in competitions.

## **DO STARS PRACTISE THEIR CONCERT DANCES IN CLASS?**

Yes. Concert dances are taught and rehearsed during regular class time.

## **CAN MY CHILD ATTEND THE PART-TIME PROGRAM AND STILL TRAIN AT THEIR STUDIO?**

Yes. Stars are welcome to participate in the SDC Part-Time Program while continuing their training at their home studio.

## **CAN MY CHILD DO THE ELEVATE PROGRAM?**

Yes. The Elevate Program is open to stars both within SDC and those training at other studios. We highly recommend this program, as it helps level up our stars to the next stage of their dance journey.

## **HOW DO I ENROL OR BOOK A TRIAL?**

To get started, please fill out the enrolment / trial form on our website and book in for your first class. When you arrive, make sure to visit our front desk to meet our team and receive all the information you need.

If you have any questions or need further assistance, please email us at [admin@schulzdancecompany.com](mailto:admin@schulzdancecompany.com) — we're always happy to help!



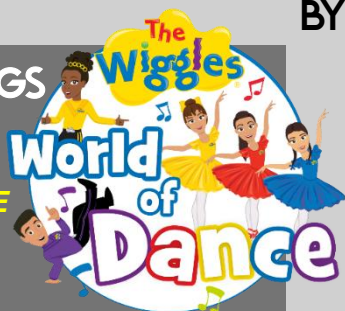
# SCHULZ DANCE COMPANY

## 2026 TIMETABLE

BY DAY

### MONDAY MORNINGS

**MORNING PRIVATE  
LESSONS & STUDIO HIRE  
AVAILABLE**



#### STUDIO WINNIE

9:00 - LITTLE TAPPERS 2-4.5 YRS  
9:15  
9:15 - WIGGLES WORLD OF DANCE  
10:00 LITTLE DANCERS 2-4.5 YRS  
+ LITTLE TUMBLERS

### MONDAYS AFTER SCHOOL HOURS

**AFTER SCHOOL PRIVATE LESSONS & STUDIO  
HIRE AVAILABLE**

#### STUDIO WINNIE

4:00 - INTERMEDIATE BALLET 10&U  
4:45  
4:45 - INTERMEDIATE LYRICAL 10&U  
5:30  
5:30 - INTERMEDIATE HIP HOP 10&U  
6:15  
6:30 - STUDIO HIRE  
9:00

### MONDAYS AFTER SCHOOL HOURS

**AFTER SCHOOL PRIVATE LESSONS & STUDIO HIRE AVAILABLE**

#### STUDIO OSWALD

4:15 - 5:15  
ELITE JAZZ 14&U  
5:15 - 6:15  
ELITE BALLET LYRICAL 14&U

6:15 - 7:00  
INTERMEDIATE CIRQUE 10&U

7:00 - 9:00  
STUDIO HIRE

#### STUDIO MICKEY & PLUTO

4:15 - 5:15  
SENIOR COMPANY LYRICAL 19&U  
5:15 - 6:15  
SENIOR COMPANY JAZZ 19&U

6:15 - 7:45  
ELITE & SENIOR COMPANY BALLET  
& POINTE / PRE-POINTE 14&U/19&U

7:45 - 8:30  
ELITE & SENIOR COMPANY HIP HOP 14&U/19&U  
HIP HOP CREW "HIMAWARI"  
8:30 - 9:00  
ELITE & SENIOR COMPANY BROADWAY JAZZ 14&U/19&U

**TUESDAYS**

**SCHULZ DANCE COLLECTIVE  
PART TIME PROGRAMME  
HIGHSCHOOL STUDENTS 12+**

**STUDIO WINNIE & REMY**

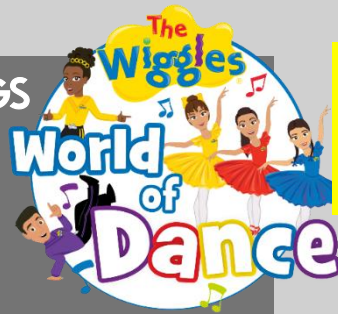
9:00 - 9:45	ARRIVAL & STUDY
10:00 - 10:15	WARM UP & MOTIVATION
10:15 - 11:00	JAZZ TECHNIQUE & CONDITIONING
11:00 - 11:30	JAZZ TECHNIQUE & SKILLS
11:30 - 12:00	CARDIO & STRENGTH TRAINING
12:00-12:40	LUNCH BREAK

**STUDIO MICKEY & PLUTO**

12:40 - 1:10	BALLET
1:10 - 1:40	STRETCH & STRENGTH
1:40 - 2:10	GENRE CERT SKILL
2:10 - 2:40	DANCE CREATIVES & TEACHER TRAINING
2:40 - 3:00	COOL DOWN, REFLECTION, CERT & DANCE STUDY

**TUESDAY MORNINGS**

**MORNING PRIVATE LESSONS & STUDIO HIRE AVAILABLE**



**STUDIO WINNIE**

9:00 - 9:45	WIGGLES WORLD OF DANCE BABY SENSORY CLASS 3 - 15 MONTHS
-------------	---

**LITTLE STARS  
LOADING**



**TUESDAYS AFTER SCHOOL HOURS**

**AFTER SCHOOL PRIVATE LESSONS & STUDIO HIRE AVAILABLE**

**STUDIO WINNIE**

4:00 - 4:30	PETITE BALLET 6&U
4:30 - 5:00	PETITE LYRICAL 6&U
5:00 - 5:30	PETITE HIP HOP 6&U
6:30-7:30	DANCE DADS



**STUDIO OSWALD**

3:40 - 4:00	PETITE CIRQUE 3-5 yrs
4:00 - 4:30	JUNIOR LYRICAL 8&U
4:30 - 5:00	JUNIOR HIP HOP 8&U
5:00 - 5:45	JUNIOR BALLET 8&U
5:45 - 6:30	JUNIOR CIRQUE 8&U
6:30 - 8:00	STUDIO HIRE

**STUDIO MICKEY & PLUTO**

4:00 - 5:00	PRE-ELITE LYRICAL 12&U
5:00 - 6:00	PRE-ELITE BALLET & PRE POINTE
6:00-7:00	PRE-ELITE JAZZ 12&U
7:00-7:45	PRE ELITE HIP HOP 12&U

## WEDNESDAY MORNINGS

### STUDIO WINNIE

9:15 - WIGGLES WORLD OF DANCE PLAYGROUP! 3 MONTHS - 5 YEARS

10:15 PARENTS & TODDLER CLASS + COFFEE / TEA FOR PARENTS AFTER



## WEDNESDAYS AFTER SCHOOL HOURS

*AFTER SCHOOL PRIVATE LESSONS & STUDIO HIRE AVAILABLE*

### STUDIO WINNIE

4:00 - 4:30

TROUPE REHEARSAL 6&U

4:30 - 5:30

TROUPE REHEARSAL 8&U

5:30 - 8:30

*STUDIO HIRE/  
PRIVATE LESSON  
AVAILABLE*

### STUDIO OSWALD

4:00 - 5:00

TROUPE REHEARSAL 10&U

5:30 - 6:30

PRE-ELITE CIRQUE 12&U

6:30 - 7:30

TROUPE REHEARSAL 12&U

7:30-8:30

ELITE & SENIOR COMPANY CIRQUE 14&U/19&U

8:30 - 9:00

INNOVATE PROGRAM - INVITE ONLY

### STUDIO MICKEY & PLUTO

4:30 - 6:30



ELEVATE PROGRAM 14&U/19&U

6:30 - 7:30

TROUPE REHEARSAL SENIOR CO

*TROUPE REHEARSAL SCHEDULE IS SENT OUT SEPARATELY*

*FOR MORE INFORMATION ABOUT OUR COMP TEAM, PLEASE EMAIL [ADMIN@SCHULZDANCECOMPANY.COM](mailto:ADMIN@SCHULZDANCECOMPANY.COM)*

## THURSDAYS AFTER SCHOOL HOURS

*AFTER SCHOOL PRIVATE LESSONS & STUDIO HIRE AVAILABLE*

### STUDIO WINNIE

4:00 - 4:30

LEMON STAR TAP 6&U

4:30 - 5:00

PETITE JAZZ 6&U

5:00 - 5:30

TINY TUMBLERS & CHEER 6&U

5:30 - 6:30

ACROBATICS STONE

BEGINNER II

6:30 - 8:30

STUDIO HIRE

### STUDIO OSWALD

YELLOW STAR TAP 8&U

4:45 - 5:30

INTERMEDIATE JAZZ 10&U

5:30 - 6:30

ACROBATICS SLATE

BEGINNER I

6:30 - 7:00

CHEER LEVEL 1 (FROM 5 YRS)

### STUDIO MICKEY & PLUTO

4:00 - 4:45

HUNNY STAR TAP 10&U

4:45 - 5:30

JUNIOR JAZZ 8&U

5:30 - 6:30

ACROBATICS STEEL

INTERMEDIATE I

6:30-7:15

ADULT TAP

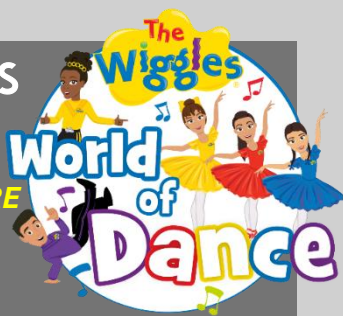
7:15 - 7:45

ADULT JAZZ / BALLET / FITNESS

FRIDAYS

FRIDAY MORNINGS

MORNING PRIVATE LESSONS & STUDIO HIRE AVAILABLE



STUDIO WINNIE

9:30 - 9:45 LITTLE TAPPERS 2-4.5 YRS
9:45 WIGGLES WORLD OF DANCE
10:30 LITTLE DANCERS 2-4.5 YRS + LITTLE TUMBLERS

SCHULZ DANCE COLLECTIVE PART TIME PROGRAMME

HIGHSCHOOL STUDENTS 12+

STUDIO WINNIE & REMY

7:30 - 8:00 ARIVAL & STUDY
8:00 - 8:45 BALLET
8:45 - 9:15 CARDIO & STRENGTH TRAINING
9:30 - 11:00 CERTIFICATE IV CLASS
9:30 - 10:30 TEACHER TRAINING
10:30 - 11:00 CERT WORK & STUDY
11:00 - 12:30 CERTIFICATE III CLASS
12:30-1:00 LUNCH BREAK

STUDIO MICKEY & PLUTO

1:00 - 1:15 WARM UP + MOTIVATION
1:15 - 2:15 JAZZ TECH & CONDITIONING + SKILLS / STRETCH & STRENGTH
2:15 - 2:45 DANCE INDUSTRY / DANCE CREATIVES
2:45 - 3:00 COOL DOWN, REFLECTION & STUDY



FRIDAYS AFTER SCHOOL HOURS

AFTER SCHOOL PRIVATE LESSONS & STUDIO HIRE AVAILABLE

STUDIO WINNIE

4:00 - 7:30

STUDIO HIRE/

PRIVATE LESSONS AVAILABLE

5:15 - 6:15

ACROBATICS TITANIUM ADVANCED II

STUDIO OSWALD

4:15 - 4:45

CONTORTION DIAMOND

4:45 - 5:15

BALANCING & APPARATUS DIAMOND

5:15 - 6:15

ACROBATICS PLATINUM ADVANCED I

6:15 - 7:00

ACROBATIC TROUPE REHEARSAL

7:00 - 7:30

TUMBLING PEARL

STUDIO MICKEY & PLUTO

4:15 - 4:45

CONTORTION PEARL

4:45 - 5:15

BALANCING & APPARATUS PEARL

5:15 - 6:15

ACROBATICS STERLING INTERMEDIATE II

6:15 - 7:00

CHEER LEVEL 2

7:00 - 7:30

TUMBLING DIAMOND

TROUPE REHEARSAL SCHEDULE IS SENT OUT SEPARATELY

FOR MORE INFORMATION ABOUT OUR COMP TEAM, PLEASE EMAIL ADMIN@SCHULZ DANCE COMPANY.COM

# SATURDAYS

## **STUDIO WINNIE &**

9:00 - 9:15

LITTLE TAPPERS 2 - 4.5 YRS

9:15 - 10:00 

WIGGLES WORLD OF DANCE

LITTLE DANCERS 2 - 4.5 YRS

+ LITTLE TUMBLERS

## **STUDIO WINNIE**

10:00-10:15 

WIGGLES WORLD OF DANCE

MUSICAL THEATRE, SINGING

& DRAMA 2 - 6 YRS

10:15 - 10:30

BALLET EXTENSION 3 - 6 YRS

## **STUDIO REMY**

10:30 - 11:15 

ELEVATE PROGRAM 6&U

## **STUDIO WINNIE**

10:30 - 11:15

MUSICAL THEATRE, SINGING

& DRAMA 8&U

11:15-11:45

MODELLING & SPEAKING

6&U/8&U/10&U

11:45 - 1:00 

ELEVATE PROGRAM 8&U/10&U

**1:00-1:30 BREAK**

## **STUDIO WINNIE**

1:30 - 2:00

CONTEMPORARY 8&U/10&U

2:00-2:30

BALLET EXTENSION 8&U/10&U

2:30 - 2:45

INDUSTRY CLASS 8&U/10&U

## **STUDIO MICKEY & PLUTO**

9:45 - 10:30 

WIGGLES WORLD OF DANCE WIGGLE & GROOVE

TODDLER & PARENT CLASS 1 - 3.5 YRS

+ LITTLE TUMBLERS

## **STUDIO OSWALD**

9:30-10:30

MUSICAL THEATRE, DRAMA

& SINGING 10&U/12&U

10:30 - 11:00

INDUSTRY CLASS 12&U

11:00 - 11:45

EXTENSION BALLET 12&U/14&U

11:45 - 12:30

CONTEMPORARY 12&U/14&U

12:30 - 1:00

MODELLING & SPEAKING 12&U-19&U

## **STUDIO OSWALD**

1:30 - 2:15

TAP TOPAZ STAR 12&U-19&U

(INVITE ONLY)

2:15 - 3:15

MUSICAL THEATRE, DRAMA

& SINGING 14&U/19&U

3:00 - 4:30 

ELEVATE PROGRAM 12&U

## **STUDIO MICKEY & PLUTO**

10:30 - 11:15

EXTENSION ACROBATICS 10&U

11:00 - 11:45

EXTENSION BALLET 19&U

11:45 - 12:30

CONTEMPORARY 19&U

## **STUDIO MICKEY & PLUTO**

1:30 - 2:15

TAP GOLD STAR 12&U-19&U

2:15 - 3:00

EXTENSION ACROBATICS 12&U

2:45 - 3:30

EXTENSION ACROBATICS 8&U

3:15-4:00

EXTENSION ACROBATICS

14&U/19&U

4:00 - 4:30

INDUSTRY CLASS 14&U/19&U

# SCHULZ DANCE COMPANY

## 2026 TIMETABLE

BY AGE GROUP

**LITTLE STARS  
LOADING**



**World of Dance**

### **BABY SENSORY CLASS**

3 - 15 MONTHS

TUESDAYS 9:00 - 9:45 AM

### **WIGGLE & GROOVE**

### **TODDLER & PARENT CLASS**

1 - 3.5 YEARS

SATURDAYS 9:45 - 10:15 AM

### **PLAYGROUP!**

3 MONTHS - 5 YRS

WEDNESDAYS 9:15 - 10:15 AM

### **WIGGLES WORLD OF DANCE CLASSES**

2 - 4.5 YRS

MONDAYS 9:00 - 9:15 AM - LITTLE TAPPERS

MONDAYS 9:15 - 10:00 AM - LITTLE DANCERS & TUMBLERS

FRIDAYS 9:30 - 9:45 AM - LITTLE TAPPERS

FRIDAYS 9:45 - 10:30 AM - LITTLE DANCERS & TUMBLERS

SATURDAYS 9:00 - 9:15 AM - LITTLE TAPPERS

SATURDAYS 9:15 - 10:00 AM - LITTLE DANCERS & TUMBLERS

SATURDAYS 10:15 - 10:30 AM - WIGGLY MUSICAL THEATRE



# PETITE 6&U

## TUESDAYS

3:40 – 4:00 PM	PETITE CIRQUE (AERIAL SILKS & LYRA)
4:00 – 4:30 PM	PETITE BALLET
4:30 – 5:00 PM	PETITE LYRICAL
5:00 – 5:30 PM	PETITE HIP HOP

## WEDNESDAYS *INVITE ONLY*

4:00 – 4:30 PM	TROUPE REHEARSALS
----------------	-------------------

## THURSDAYS

4:00 – 4:30 PM	LEMON STAR TAP
4:30 – 5:00 PM	PETITE JAZZ
5:00 – 5:30 PM	TINY TUMBLERS & CHEER

## SATURDAYS

10:00 – 10:15 AM	MUSICAL THEATRE, SINGING & DRAMA
10:15 – 10:30 AM	EXTENSION BALLET
10:30 AM – 11:15 AM	ELEVATE PROGRAM
11:15 – 11:45 AM	MODELLING & SPEAKING

# JUNIOR 8&U

## TUESDAYS

4:00 – 4:30 PM	JUNIOR LYRICAL
4:30 – 5:00 PM	JUNIOR HIP HOP
5:00 – 5:45 PM	JUNIOR BALLET
5:45 – 6:30 PM	JUNIOR CIRQUE (AERIAL SILKS & LYRA)

## WEDNESDAYS *INVITE ONLY*

4:30 – 5:30 PM	TROUPE REHEARSALS
----------------	-------------------

## THURSDAYS

4:00 – 4:45 PM	YELLOW STAR TAP
4:45 – 5:30 PM	JUNIOR JAZZ
5:30 – 6:30 PM	ACROBATICS BEGINNER I & II + INTERMEDIATE I
6:30-7:00 PM	CHEER LEVEL 1

## FRIDAYS *INVITE ONLY*

4:15 – 4:45 PM	CONTORTION
4:45 – 5:15 PM	BALANCING
5:15 – 6:15 PM	ACROBATICS INTERMEDIATE II + ADVANCED I & II
6:15 – 7:00 PM	CHEER LVL 2
6:16 – 7:00 PM	TROUPE
7:00 – 7:30 PM	TUMBLING

## SATURDAYS

10:30 – 11:15 AM	MUSICAL THEATRE, SINGING & DRAMA
11:15 – 11:45 AM	MODELLING & SPEAKING
11:45 AM – 1:00 PM	ELEVATE PROGRAM
<b><i>BREAK 1:00 – 1:30 PM</i></b>	
1:30 – 2:00 PM	CONTEMPORARY
2:00 -2:30 PM	BALLET EXTENSION
2:30 – 3:15 PM	ACRO EXTENSION
3:15 – 3:30 PM	INDUSTRY CLASS



# INTERMEDIATE 10&U

## MONDAYS

4:00 – 4:45 PM INTER BALLET  
 4:45 – 5:30 PM INTER LYRICAL  
 5:30 – 6:15 PM INTER HIP HOP  
 6:15 – 7:00 PM INTER CIRQUE  
 (AERIAL SILKS & LYRA)



## WEDNESDAYS *INVITE ONLY*

4:00 – 5:00 PM TROUPE REHEARSALS

## THURSDAYS

4:00 – 4:45 PM HUNNY STAR TAP  
 4:45 – 5:30 PM INTER JAZZ  
 5:30 – 6:30 PM ACROBATICS  
 BEGINNER I & II + INTERMEDIATE I  
 6:30-7:00 PM CHEER LEVEL 1

## FRIDAYS *INVITE ONLY*

4:15 – 4:45 PM CONTORTION  
 4:45 – 5:15 PM BALANCING  
 5:15 – 6:15 PM ACROBATICS  
 INTERMEDIATE II + ADVANCED I & II  
 6:15 – 7:00 PM CHEER LVL 2  
 6:16 – 7:00 PM TROUPE  
 7:00 – 7:30 PM TUMBLING

## SATURDAYS

9:30 – 10:30 AM MUSICAL THEATRE,  
 SINGING & DRAMA  
 10:30 AM – 11:15 AM ACRO EXTENSION  
 11:15 – 11:45 AM MODELLING &  
 SPEAKING  
 11:45 AM – 1:00 PM ELEVATE PROGRAM

*BREAK 1:00 – 1:30 PM*

1:30-2:00 PM CONTEMPORARY  
 2:00 – 2:30 PM BALLET EXTENSION  
 2:30 – 2:45 PM INDUSTRY CLASS

# PRE-ELITE 12&U

## TUESDAYS

4:00 – 5:00 PM PRE-ELITE LYRICAL  
 5:00 – 6:00 PM PRE-ELITE BALLET &  
 PRE POINTE  
 6:00 – 7:00 PM PRE-ELITE JAZZ  
 7:00 – 7:45 PM PRE-ELITE HIP HOP

## WEDNESDAYS

5:30 - 6:30 PM PRE-ELITE CIRQUE  
 (AERIAL SILKS & LYRA)

*INVITE ONLY*

6:30 – 7:30 PM TROUPE REHEARSALS  
 8:30 – 9:00 PM INNOVATE PROGRAM

## THURSDAYS

5:30 – 6:30 PM ACROBATICS  
 BEGINNER I & II + INTERMEDIATE I  
 6:30-7:00 PM CHEER LEVEL 1

## FRIDAYS *INVITE ONLY*

4:15 – 4:45 PM CONTORTION  
 4:45 – 5:15 PM BALANCING  
 5:15 – 6:15 PM ACROBATICS  
 INTERMEDIATE II + ADVANCED I & II  
 6:15 – 7:00 PM CHEER LVL 2  
 6:16 – 7:00 PM TROUPE  
 7:00 – 7:30 PM TUMBLING

## SATURDAYS

9:30 – 10:30 AM MUSICAL THEATRE,  
 SINGING & DRAMA  
 10:30 – 11:00 AM INDUSTRY CLASS  
 11:00-11:45 AM BALLET EXTENSION  
 11:45 AM – 12:30PM CONTEMPORARY  
 12:30 – 1:00 PM MODELLING &  
 SPEAKING

*BREAK 1:00 – 1:30 PM*

1:30 – 2:15PM GOLD/TOPAZ TAP  
 2:15 – 3:00 PM ACRO EXTENSION  
 3:00 – 4:30 PM ELEVATE PROGRAM

# ELITE 14&U

## MONDAYS

4:15 – 5:15 PM	ELITE JAZZ
5:15 – 6:15 PM	ELITE LYRICAL
6:15 – 7:45 PM	BALLET & POINTE / PRE-POINTE
7:45 – 8:30 PM	HIP HOP CREW “HIMAWARI”
8:30 – 9:00 PM	BROADWAY JAZZ

## WEDNESDAYS

4:30 – 6:30PM	ELEVATE PROGRAM <i>INVITE ONLY</i>
6:30 – 7:30 PM	TROUPE REHEARSALS
7:30 - 8:30 PM	ELITE CIRQUE (AERIAL SILKS & LYRA) <i>INVITE ONLY</i>
8:30 – 9:00 PM	INNOVATE PROGRAM

## THURSDAYS

5:30 – 6:30 PM	ACROBATICS BEGINNER I & II + INTERMEDIATE I
6:30-7:00 PM	CHEER LEVEL 1

## FRIDAYS *INVITE ONLY*

4:15 – 4:45 PM	CONTORTION
4:45 – 5:15 PM	BALANCING
5:15 – 6:15 PM	ACROBATICS INTERMEDIATE II + ADVANCED I & II
6:15 – 7:00 PM	CHEER LVL 2
6:16 – 7:00 PM	TROUPE
7:00 – 7:30 PM	TUMBLING

## SATURDAYS

11:00-11:45 AM	BALLET EXTENSION
11:45 AM – 12:30PM	CONTEMPORARY
12:30 – 1:00 PM	MODELLING & SPEAKING

*BREAK 1:00 – 1:30 PM*

1:30 – 2:15PM	GOLD/TOPAZ TAP
2:15 – 3:15 PM	MUSICAL THEATRE, SINGING & DRAMA
3:15 – 4:00 PM	ACRO EXTENSION
4:00 – 4:30 PM	INDUSTRY CLASS

# SENIOR COMPANY 19&U

## MONDAYS

4:15 – 5:15 PM	SENIOR CO LYRICAL
5:15 – 6:15 PM	SENIOR CO JAZZ
6:15 – 7:45 PM	BALLET & POINTE / PRE-POINTE
7:45 – 8:30 PM	HIP HOP CREW “HIMAWARI”
8:30 – 9:00 PM	BROADWAY JAZZ

## WEDNESDAYS

4:30 – 6:30PM	ELEVATE PROGRAM <i>INVITE ONLY</i>
6:30 – 7:30 PM	TROUPE REHEARSALS
7:30 - 8:30 PM	ELITE CIRQUE (AERIAL SILKS & LYRA) <i>INVITE ONLY</i>
8:30 – 9:00 PM	INNOVATE PROGRAM

## THURSDAYS

5:30 – 6:30 PM	ACROBATICS BEGINNER I & II + INTERMEDIATE I
6:30-7:00 PM	CHEER LEVEL 1

## FRIDAYS *INVITE ONLY*

4:15 – 4:45 PM	CONTORTION
4:45 – 5:15 PM	BALANCING
5:15 – 6:15 PM	ACROBATICS INTERMEDIATE II + ADVANCED I & II
6:15 – 7:00 PM	CHEER LVL 2
6:16 – 7:00 PM	TROUPE
7:00 – 7:30 PM	TUMBLING

## SATURDAYS

11:00-11:45 AM	BALLET EXTENSION
11:45 AM – 12:30PM	CONTEMPORARY
12:30 – 1:00 PM	MODELLING & SPEAKING

*BREAK 1:00 – 1:30 PM*

1:30 – 2:15PM	GOLD/TOPAZ TAP
2:15 – 3:15 PM	MUSICAL THEATRE, SINGING & DRAMA
3:15 – 4:00 PM	ACRO EXTENSION
4:00 – 4:30 PM	INDUSTRY CLASS

## ADULT CLASSES

### **TUESDAYS**

6:30 – 7:30 PM  
DANCE DADS

### **THURSDAYS**

6:30 – 7:15 PM  
ADULT TAP

7:15 – 7:45 PM

ADULT JAZZ/BALLET/FITNESS

## PART TIME DANCE

### **TUESDAYS**

10:00 AM – 3:00 PM

SCHULZ DANCE COLLECTIVE  
PART TIME DANCE PROGRAM

### **FRIDAYS**

8:00 AM – 3:00 PM

SCHULZ DANCE COLLECTIVE  
PART TIME DANCE PROGRAM  
+ CERT IN DANCE & TEACHING

## **SINGING & GUITAR LESSONS:**

Guitar lessons and singing tuition are booked separately subject to teacher availability. Lessons will be held in their own beautiful studios, Studio Marie and Studio Remi. To book your singing or guitar lessons, please contact Schulz Dance Company.

## **PRIVATE LESSONS:**

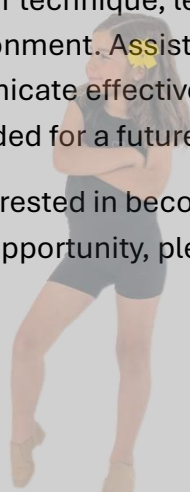
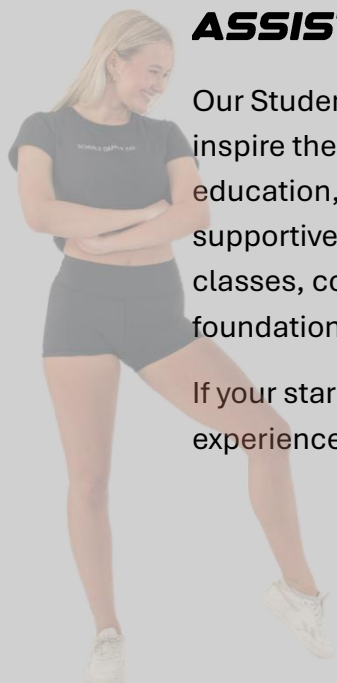
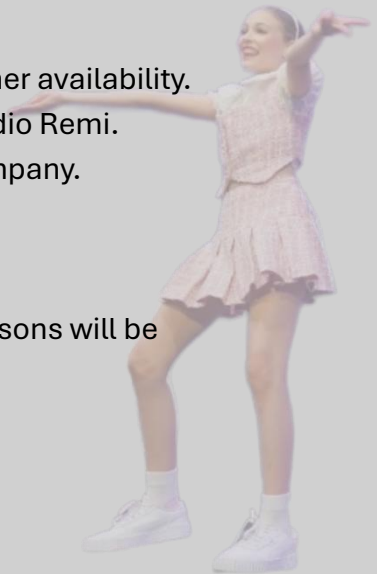
Private lessons are booked separately subject to teacher availability. Lessons will be worked around lessons on the timetable as well as on Sundays. To book your private lessons, please contact Schulz Dance Company.

## **STUDENT TEACHERS:**

### **ASSISTANT TEACHERS & JUNIOR STAFF PROGRAM**

Our Student Assistant Teacher and Junior Staff Program is designed to educate and inspire the next generation of dance teachers. This program focuses on safe dance education, proper technique, leadership skills, and hands-on teaching experience in a supportive environment. Assistant Teachers & Junior Staff will learn how to assist in classes, communicate effectively with younger stars and their families, and develop the foundations needed for a future in dance teaching and training.

If your star is interested in becoming an assistant teacher and to have this amazing experience and opportunity, please contact [admin@schulzdancecompany.com](mailto:admin@schulzdancecompany.com)



# 2026 PRICING & FEE STRUCTURE

## ENROLMENT FEE

Families will incur a \$50 enrolment fee for the year per family to be paid via cash or card at the front desk of Schulz Dance Company, upon enrolment. Card payments will receive a 2% surcharge due to square pay.

Families only signing up for Playgroup & Baby Sensory DO NOT require an enrolment fee to be paid.

## HOW TO PAY

Payments can be made in full at the start of every term by the due date listed on the invoice. Full payments may be made via Stripe Pay, or at the front desk of Schulz Dance Company using cash or card.

*Please note that card payments incur a 2% surcharge due to Square Pay fees.*

**These payment options are available for FULL payments only.**

For part payments, a fortnightly direct debit arrangement is required.

Schulz Dance Company will provide instructions on how to set up direct debits upon enrolment.

*Term fees are final, once signed up and must be paid weather your star attends the classes or not. Any fees not paid by the due date, may result in late fees.*

**CLASS PRICING ALL Prices ARE Inclusive of GST**



### ALL Dance, Acrobatics, Musical Theatre & Drama, Cheer, Modelling & Speaking Classes

*Each price is PER STAR, PER CLASS, PER TERM*

15 Minute Class	\$100
30 Minute Class	\$135
45 Minute Class	\$165
60 Minute Class	\$200
75 Minute Class	\$235
90 Minute Class	\$270

### PLAY GROUP CLASS

\$10 per Star

\$5 per star if enrolled star at SDC for 2026

PAY AS YOU GO! Bring cash or pay card

*Card will incur a fee of 1.9% due to square pay*

### ALL CIRQUE CLASS (Aerial Silk & Lya)

*Each price is PER STAR, PER CLASS, PER TERM*

Petite Cirque Class	\$150
Junior Cirque Class	\$210
Inter Cirque Class	\$210
Pre Elite Cirque Class	\$260
Elite / Senior Co	
Cirque Class	\$260

### BABY SENSORY CLASS

TERM FEE \$165.00 per star, per term

CASUAL CLASS: \$20 per star, per class

*Card will incur a fee of 1.9% due to square pay*

**ALL SIBLINGS ENROLLED GET \$20 OFF PER TERM, PER STAR**

**SEE NEXT PAGE FOR OUR INCREDIBLE BUNDLE DEALS!**

# BUNDLE DEALS!

ALL PRICES ARE PER STAR, PER TERM AND ARE INCLUSIVE OF GST

REMINDER: Age is as of December 31<sup>st</sup> 2026

## WIGGLES WORLD OF DANCE

2 - 4.5 YRS

Little Dancers & Little Tumblers + Little Tappers or Wiggly Musical Theatre	\$220
	Worth \$300
Little Dancers & Little Tumblers + Little Tappers + Wiggly Musical Theatre	\$250
	Worth \$400

## PETITES

3 - 6 YRS

2 CLASS PASS \$240

Worth up to \$270

4 CLASS PASS \$420

Worth up to \$540

**PETITE UNLIMITED PASS \$670**

Worth OVER \$2000

### INCLUDING CIRQUE CLASS

4 CLASS PASS \$470

Worth up to \$555

**PETITE UNLIMITED PASS \$720**

Worth OVER \$2000

## JUNIORS

7 - 8 YRS

4 CLASS PASS \$495

Worth up to \$695

**JUNIOR UNLIMITED PASS \$700**

Worth OVER \$2000

### INCLUDING CIRQUE CLASS

4 CLASS PASS \$550

Worth up to \$730

**JUNIOR UNLIMITED PASS \$780**

Worth OVER \$2000

## ADULT CLASSES

ADULT TAP - STAR ENROLLED \$115 Worth \$165

ADULT JAZZ/BALLET/FITNESS - STAR ENROLLED \$85 Worth \$135

ADULT TAP & ADULT JAZZ/BALLET/FITNESS \$200 Worth \$300

ADULT TAP & ADULT JAZZ/BALLET/FITNESS - STAR ENROLLED \$150 Worth \$200

DANCE DADS CLASS - STAR ENROLLED \$50

All Unlimited Passes include the elevate program and the acro program

All Unlimited Passes DO NOT include troupe lessons, private lesson, music lessons, singing lessons & the part time program

# BUNDLE DEALS!

ALL PRICES ARE PER STAR, PER TERM AND ARE INCLUSIVE OF GST

REMINDER: Age is as of December 31<sup>st</sup> 2026

## INTERMEDIATES

9 - 10 YRS

4 CLASS PASS \$560  
Worth up to \$730

INTER UNLIMITED PASS \$800  
Worth OVER \$2000

### INCLUDING CIRQUE CLASS

4 CLASS PASS \$615  
Worth up to \$765

INTER UNLIMITED PASS \$880  
Worth OVER \$3100

## PRE-ELITES

11 - 12 YRS

4 CLASS PASS \$600  
Worth up to \$730

PRE ELITE UNLIMITED PASS \$870  
Worth OVER \$3000

### INCLUDING CIRQUE CLASS

4 CLASS PASS \$660  
Worth up to \$765

PRE ELITE UNLIMITED PASS \$970  
Worth OVER \$3300

## ELITES

13 - 14 YRS

4 CLASS PASS \$620  
Worth up to \$730

ELITE UNLIMITED PASS \$890  
Worth OVER \$3200

### INCLUDING CIRQUE CLASS

4 CLASS PASS \$680  
Worth up to \$765

ELITE UNLIMITED PASS \$990  
Worth OVER \$3500

## SENIOR COMPANY

15 + YRS

4 CLASS PASS \$630  
Worth up to \$730

SENIOR CO UNLIMITED PASS \$895  
Worth OVER \$3300

### INCLUDING CIRQUE CLASS

4 CLASS PASS \$690  
Worth up to \$765

SENIOR CO UNLIMITED PASS \$995  
Worth OVER \$3500

All Unlimited Passes include the elevate program and the acro program

All Unlimited Passes DO NOT include troupe lessons, private lesson, music lessons, singing lessons & the part time program



## THE ELEVATE PROGRAM PRICES

ALL ELEVATE PROGRAMS ARE FREE AND INCLUDED IN THE UNLIMITED PASS

PETITE	ELEVATE PROGRAM	6&U	\$200.00
JUNIOR / INTER	ELEVATE PROGRAM	8&U/10&U	\$350.00
PRE ELITE	ELEVATE PROGRAM	8&U/10&U	\$400.00
ELITE / SENIOR CO	ELEVATE PROGRAM	14&U/19&U	\$450.00

## FRIDAY ACRO PROGRAM PRICE

THE FRIDAY ACRO PROGRAM IS FREE AND INCLUDED IN THE UNLIMITED PASS

CONTORTION I OR II	+	BALANCING & APPARATUS I OR II	+	
CHEER II	+	TUMBLING I OR II	+	
ACRO STERLING	OR	ACRO PLATNIUM & ACRO TITANIUM		\$550
				Worth \$770

## SCHULZ DANCE COLLECTIVE PART TIME PRICE

TUESDAY FULL DAY	\$700	UNLIMITED 2026 SDC STAR	\$600
FRIDAY FULL DAY	\$700	UNLIMITED 2026 SDC STAR	\$600
TUESDAY FULL DAY & FRIDAY FULL DAY			\$1100.00
TUESDAY FULL DAY & FRIDAY FULL DAY		UNLIMITED 2026 SDC STAR	\$900.00

*Certificates in dance is an add on through Empower dance and must be paid directly through them.*

*Please contact Schulz Dance Company for information and pricing.*

## TROUPE FEES

Troupe fees are separate from term fees and are not included in the Unlimited Pass. For information on troupe fees and competitions, please email [admin@schulzdancecompany.com](mailto:admin@schulzdancecompany.com).

## PRIVATE LESSONS & STUDIO HIRE FEES

Private lessons and studio hire fees are priced separately. For more information on private lesson and studio hire fees, please email [admin@schulzdancecompany.com](mailto:admin@schulzdancecompany.com).



# FLYNN SCHOOL OF MUSIC

AFFILIATED WITH SCHULZ DANCE COMPANY

## SINGING LESSONS

PRIVATE TUITION ONLY

WEEKLY 30 MINUTES (10 lessons per term) \$435

STAR ON SDC UNLIMITED \$400

WEEKLY 45 MINUTES (10 lessons per term) \$650

STAR ON SDC UNLIMITED \$600

WEEKLY 60 MINUTES (10 lessons per term) \$870

STAR ON SDC UNLIMITED \$800

BIWEEKLY 30 MINUTES (5 lessons per term) \$235

STAR ON SDC UNLIMITED \$220

BIWEEKLY 45 MINUTES (5 lessons per term) \$345

STAR ON SDC UNLIMITED \$325

BIWEEKLY 60 MINUTES (5 lessons per term) \$460

STAR ON SDC UNLIMITED \$435

## GUITAR LESSONS

PRIVATE TUITION ONLY

WEEKLY 30 MINUTES (10 lessons per term) \$400

STAR ON SDC UNLIMITED \$350

WEEKLY 45 MINUTES (10 lessons per term) \$500

STAR ON SDC UNLIMITED \$450

WEEKLY 60 MINUTES (10 lessons per term) \$600

STAR ON SDC UNLIMITED \$550

BIWEEKLY 30 MINUTES (5 lessons per term) \$225

STAR ON SDC UNLIMITED \$200

BIWEEKLY 45 MINUTES (5 lessons per term) \$275

STAR ON SDC UNLIMITED \$250

BIWEEKLY 60 MINUTES (5 lessons per term) \$325

STAR ON SDC UNLIMITED \$300



# **2026 SCHULZ DANCE COMPANY TERMS & CONDITIONS AND ENROLMENT AGREEMENT**

I, the Enrollee (parent/guardian if the student is under 18 years of age), hereby agree to the Terms and Conditions below and confirm that all information provided is true, correct, and not false or misleading.

I acknowledge that I have read and understand the Schulz Dance Company 2026 Handbook.

I agree that Schulz Dance Company may use my name and my child's name, any images, photographs, or videos taken by the studio, taken by Schulz dance Company's staff and family, taken by community events, competitions, and concerts, or provided by myself, to post on social media, share with the SDC family and use for promotional purposes.

All choreography and accompanying music remain the property of, or are licensed for use by, Schulz Dance Company and may not be used, reproduced, taught, or performed without prior written permission from Ashleigh Schulz (Owner of Schulz Dance Company) or an authorised agent acting on her behalf.

I acknowledge that all Schulz Dance Company classes, lessons, rehearsals, and performances involve physical activity. I agree to release Schulz Dance Company from any liability for any injury or harm that I or my child may sustain during the normal conduct of classes, rehearsals, or performances, including activities conducted offsite or outside Schulz Dance Company premises.

I acknowledge that Schulz Dance Company does not accept responsibility for any injury, accident, or harm that I or my child may sustain on or around the studio premises, including before, during, or after classes, rehearsals, performances, or any activities conducted in or around the property.

All Schulz Dance Company premises and equipment must be treated with care and respect. Parents/guardians are responsible for any damage caused by themselves or their children to the studio property, fixtures, or contents, whether inside or around the premises.

I acknowledge that Schulz Dance Company is committed to providing a safe, inclusive, and supportive environment for all children and families, free from violence, bullying, harassment, and exploitation. Schulz Dance Company is committed to delivering programs that nurture each enrollee's physical, emotional, and personal wellbeing, while promoting respect, confidence, and dignity. Bullying, disruptive behaviour, or inappropriate conduct by any child, family member, or visitor will not be tolerated on or around Schulz Dance Company premises or at any events where Schulz Dance Company is present.

To demonstrate movements and exercises and to guide or correct a student's technique, teachers may need to use appropriate physical contact. Physical contact may also be required when administering first aid. Any aggressive, inappropriate, or harmful physical contact is strictly prohibited on Schulz Dance Company premises or within the Schulz Dance Company community.

I accept that all Schulz Dance Company fees will be paid by the due date and in the manner required by Schulz Dance Company. I acknowledge that any unpaid balance will remain due and may incur a late fee. I accept that failure to pay fees may result in debt recovery actions, which could include legal steps, added charges, and reporting to a credit reporting service.

I acknowledge that no refunds or credits are provided for missed classes, concerts, or competitions under any circumstances. If I choose to discontinue participation in competitions, concerts, classes, or enrolment at Schulz Dance Company partway through a term or during the year, all fees already charged are non-refundable, and any outstanding balance for classes, term fees, concerts, or competitions remains payable.

I agree that I will not make any false, harmful, or disparaging statements about Schulz Dance Company, through spoken or written communication and will conduct myself in good faith toward its affiliates, related entities, and current or former staff.

Parents/guardians are asked to clearly label all clothing, shoes, and personal items brought to class. Schulz Dance Company is not responsible for lost or misplaced property. Any lost items found will be placed in the studio's lost property area for the remainder of the term. Items not claimed by the end of each term will be donated to charity without further notice.

I agree that the Terms and Conditions of trading are binding on the student and their successors, trustees, administrators, guarantors, and representatives, and shall apply to Schulz Dance Company and anyone legally taking over its rights or responsibilities.

I agree to notify Schulz Dance Company by email at [admin@schulzdancecompany.com](mailto:admin@schulzdancecompany.com) of any class cancellations, changes, or updates to contact or medical information. Any adjustments to my account, if applicable, will be made from the date the email is received.

I agree that the contact details I provided when registering are correct and will be used for Schulz Dance Company to communicate important information. I acknowledge if any details change, I must immediately inform Schulz Dance Company via email at [admin@schulzdancecompany.com](mailto:admin@schulzdancecompany.com)

I understand that Schulz Dance Company classes are regularly developed and reviewed to ensure quality, compliance, and alignment with current industry standards. The 2026 Enrolment Agreement explains how Schulz Dance Company protects the rights of current and prospective students in line with consumer protection laws and applies to all students and potential students.

I acknowledge that Schulz Dance Company takes all reasonable measures to ensure that only suitable and appropriately qualified individuals are engaged to work with children. The company follows best-practice recruitment and screening procedures, including the use of comprehensive background checks. All staff and volunteers working with children are required to hold a current Working with Children Check (WWC), with criminal history assessments conducted where applicable.

I understand that Schulz Dance Company reserves the right to amend any information in the Schulz Dance Company 2026 Handbook and these Terms and Conditions at any time, with changes taking effect immediately upon notification via email.

# ***CONTACT US***

If you have any questions about our studio, please don't hesitate to reach out—we're always happy to help!

Our friendly team is eager to assist with any enquiries and make sure you feel supported every step of the way.

With many years of experience in the dance industry, our team are incredibly knowledgeable and always ready to answer your questions, offer guidance, and help our stars and families feel right at home.



[admin@schulzdancecompany.com](mailto:admin@schulzdancecompany.com)



[www.schulzdancecompany.com](http://www.schulzdancecompany.com)



0433 832 732

## ***STAY CONNECTED***

Connecting with our dance family, near and far, is something we truly love. Our social media is the best place to see the heart of Schulz Dance Co, sharing our classes, our studio, and the supportive community that makes every dancer feel at home.



[/schulzdancecompany](https://www.facebook.com/schulzdancecompany)



[@schulzdancecompany](https://www.instagram.com/schulzdancecompany)

Thank you for trusting us with your time, your energy, and your love of dance, music, and the performing arts. We are so proud of the magic Schulz Dance Company brings and we can't wait to create more unforgettable moments together as a family.

